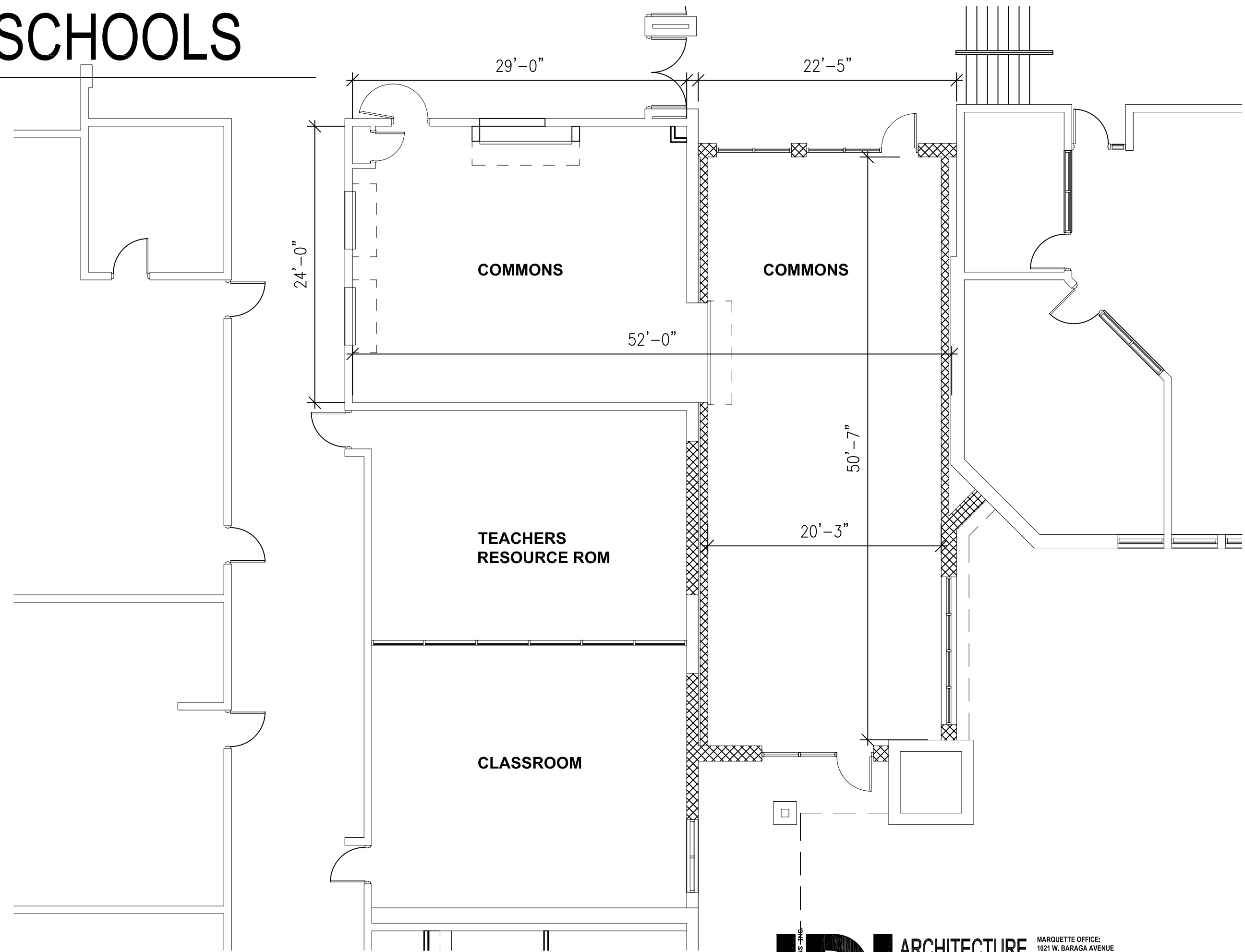


BEAL CITY SCHOOLS

COMMONS

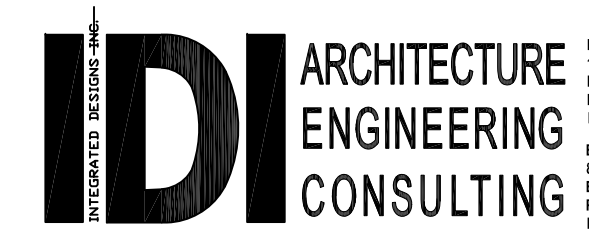


CONCEPT PLAN

SCALE: 1/8" = 1'-0"

1,500 SF RENOVATION / NEW CONSTRUCTION

2/8/23



MARQUETTE OFFICE:
1021 W. BARAGA AVENUE
MARQUETTE, MI 49855
PHONE: (906)228-4480
FAX: (906)228-7524

BRIGHTON OFFICE:
8571 W. GRAND RIVER AVE., SUITE 600
BRIGHTON, MI 48816
PHONE: (810)229-2701
FAX: (810)229-6767